

Anschlussplan E475eSPT

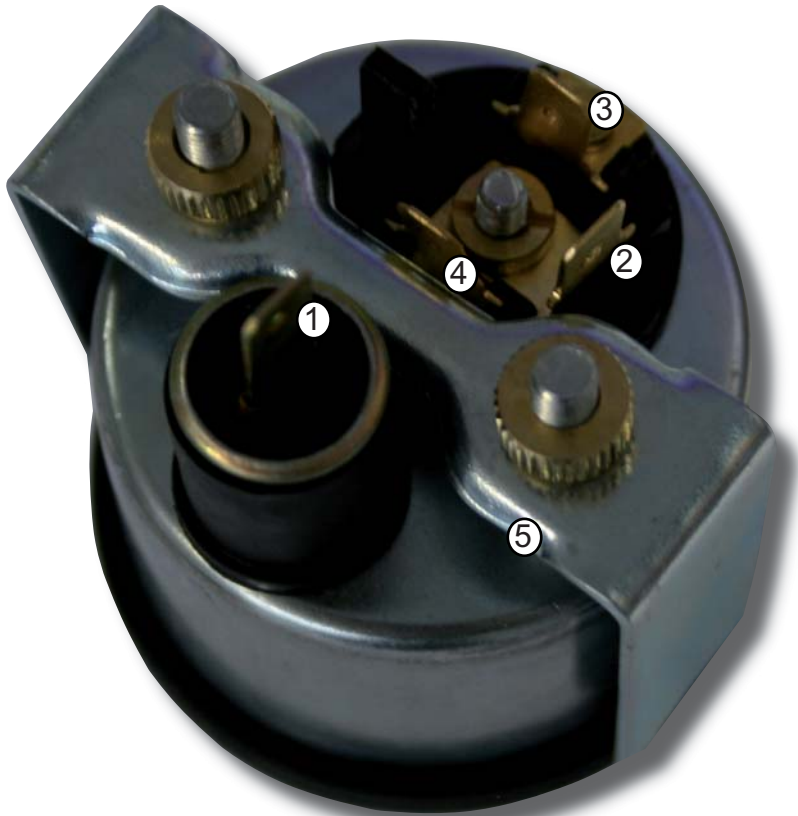
Öltemperatur Anzeige
Oil temperature

BASTUCK®



- ① + Beleuchtung
- ② - Beleuchtung (Masse)
- ③ + 10 V
- ④ Temperatur Fühler
- ⑤ Masse

- ① + Eclairage
- ② - Eclairage (terre)
- ③ + 10 V
- ④ thermistance circuit d'eau
- ⑤ terre



- ① + light
- ② - light (ground)
- ③ + 10 V
- ④ temp sender
- ⑤ ground

BASTUCK®

BASTUCK & Co GmbH
D-66822 Lebach

Tel. +49 (0) 6881-92491-01
Fax +49 (0) 6881-92491-19

service@bastuck.de
www.bastuck.com



Anschlussplan E476SPT

Amperemeter

BASTUCK®



- ① + Beleuchtung
- ② Spannungs Eingang
- ③ Spannungs Ausgang
- ④ Masse

- ① + Eclairage
- ② entrée
- ③ sortie
- ④ terre

- ① + light
- ② entrance
- ③ exit
- ④ ground



BASTUCK®

BASTUCK & Co GmbH
D-66822 Lebach

Tel. +49 (0) 6881-92491-01
Fax +49 (0) 6881-92491-19

service@bastuck.de
www.bastuck.com



Anschlussplan E477SPT

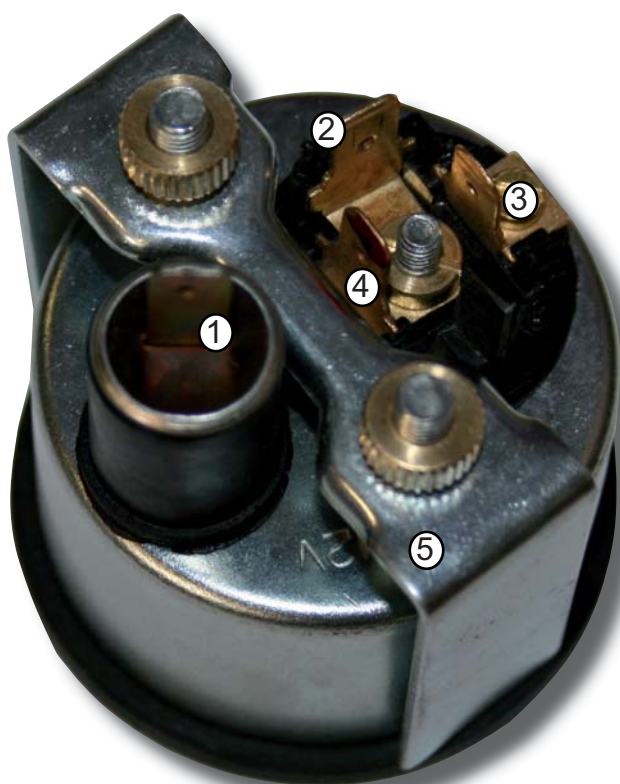
Voltmeter

BASTUCK®



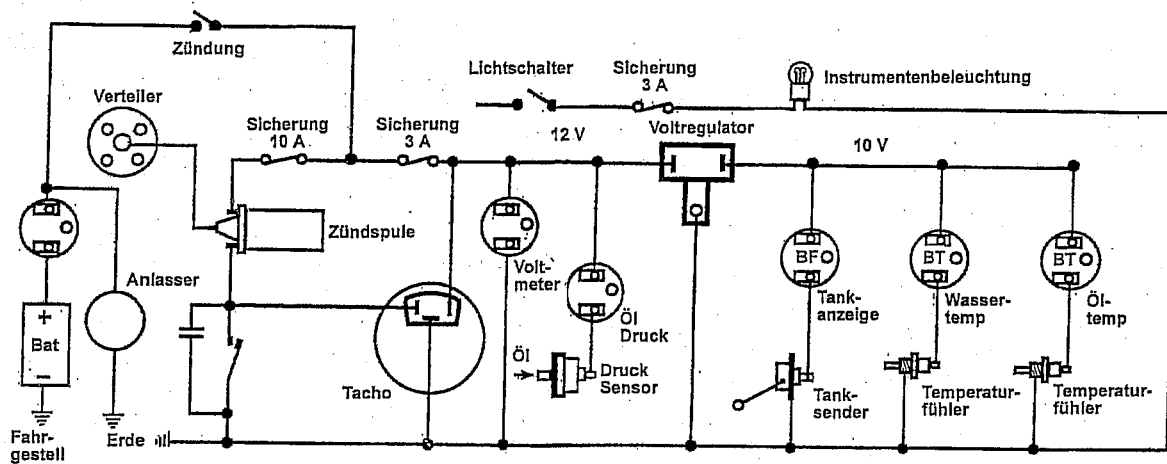
- ① + Beleuchtung
- ② - Beleuchtung (Masse)
- ③ + Voltmeter
- ④ - Voltmeter
- ⑤ Masse

- ① + Eclairage
- ② - Eclairage (terre)
- ③ + Mètre de volt
- ④ - Mètre de volt
- ⑤ terre

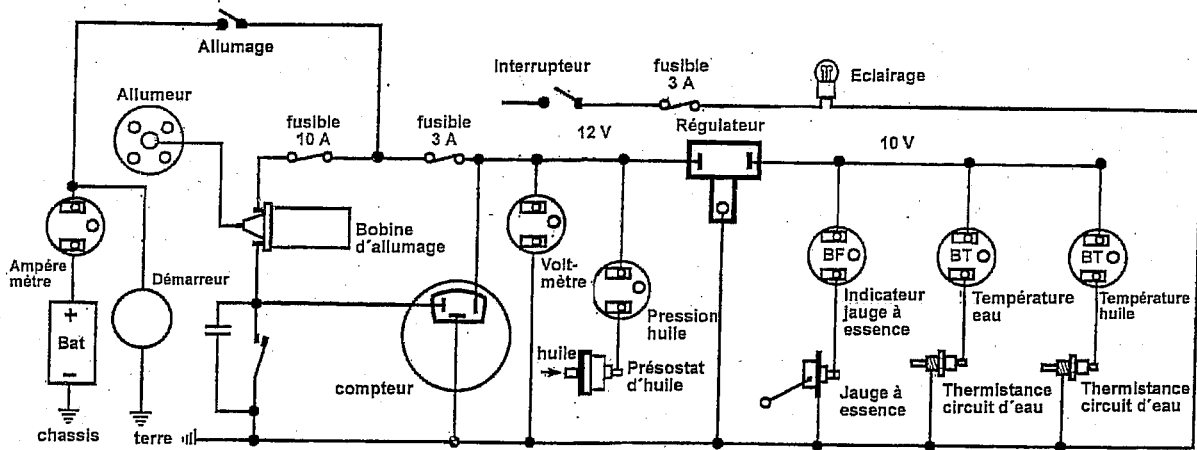


- ① + light
- ② - light (ground)
- ③ + voltmeter
- ④ - voltmeter
- ⑤ ground

Anschlussplan für klassische Instrumente



Schema de cablage pur instruments



Wiring diagram for classic instruments

